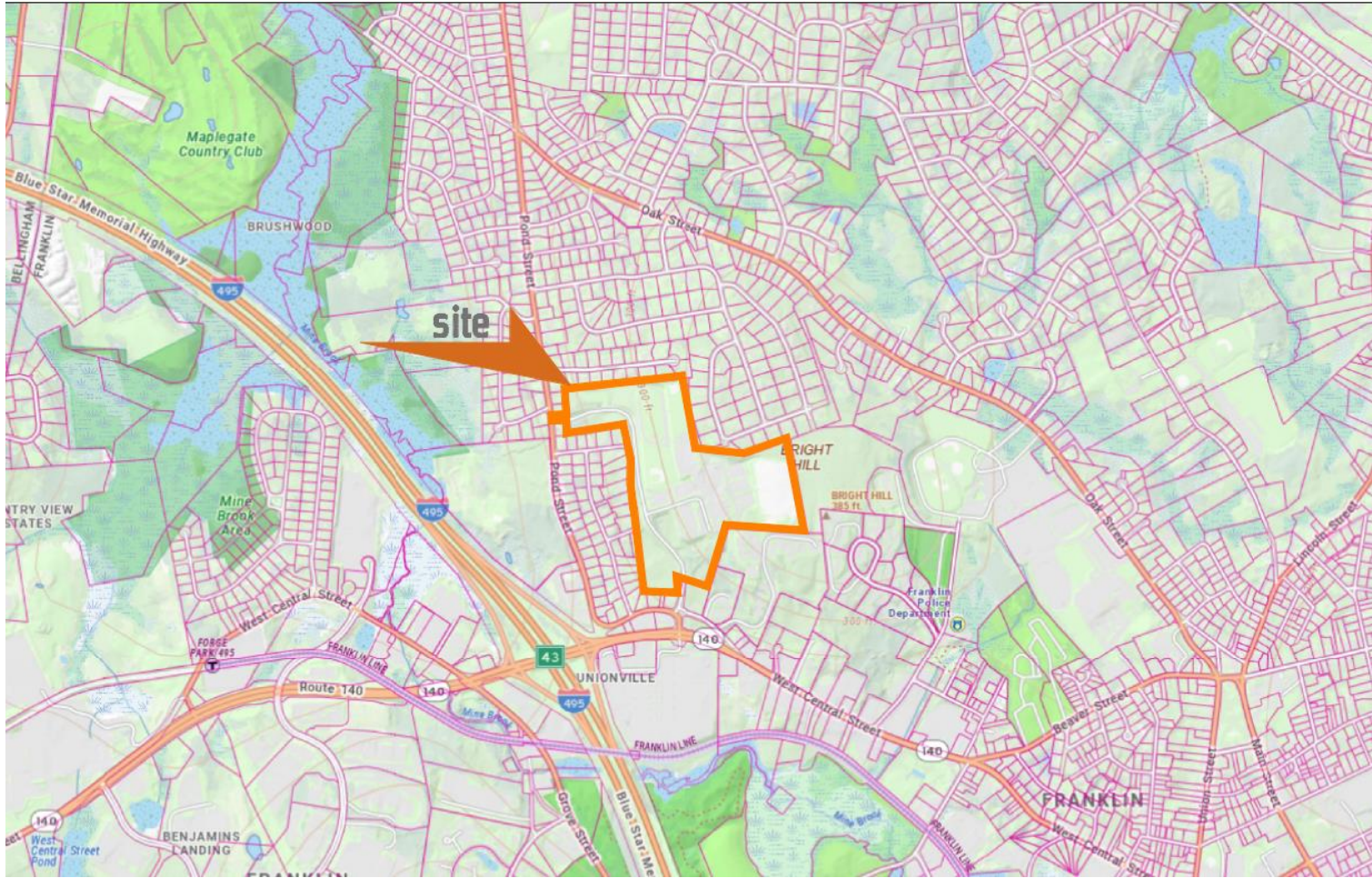


Tri-County Regional Technical High School Project

SITE PLAN REVIEW HEARING-MAY 06, 2024





SITE PLAN / EXISTING

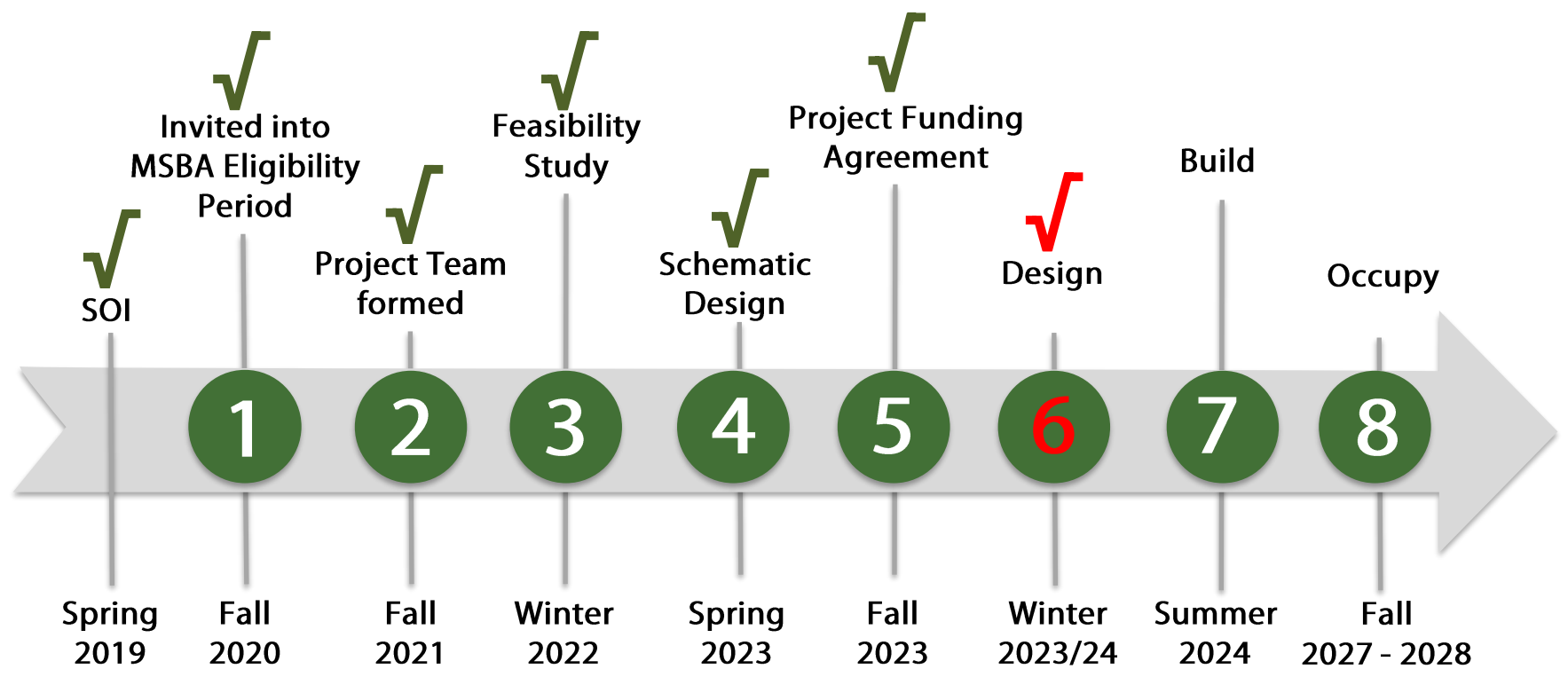


WARNER LARSON
LANDSCAPE ARCHITECTS



Tri-County Regional Technical High School

MSBA Process (Modules 1 through 8)



Massachusetts School Building Authority
Funding Affordable, Sustainable, and Efficient Schools in Partnership with Local Communities

Tri-County Regional Technical High School

SITE RENDERING



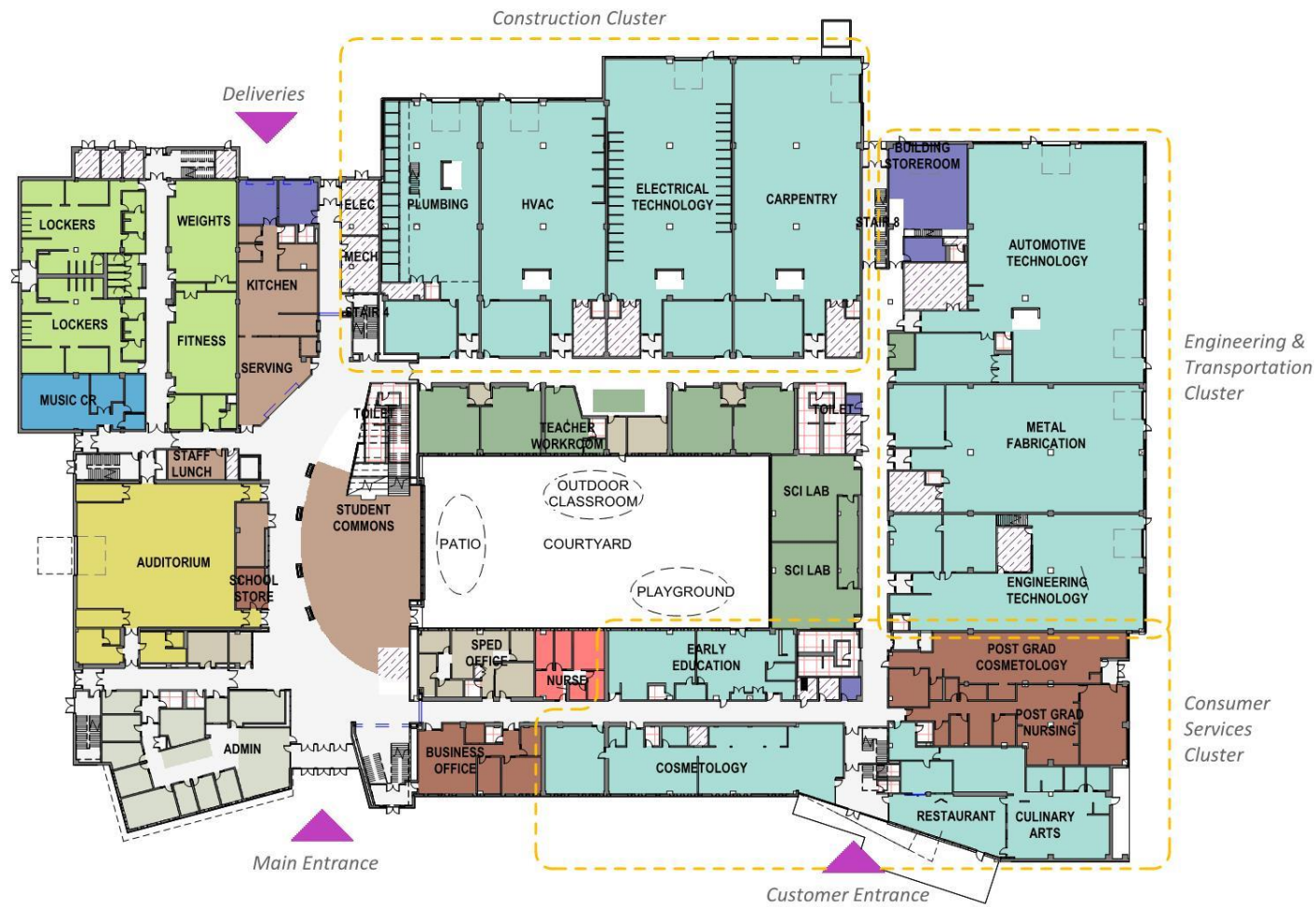
WARNER LARSON
LANDSCAPE ARCHITECTS



Tri-County Regional Technical High School

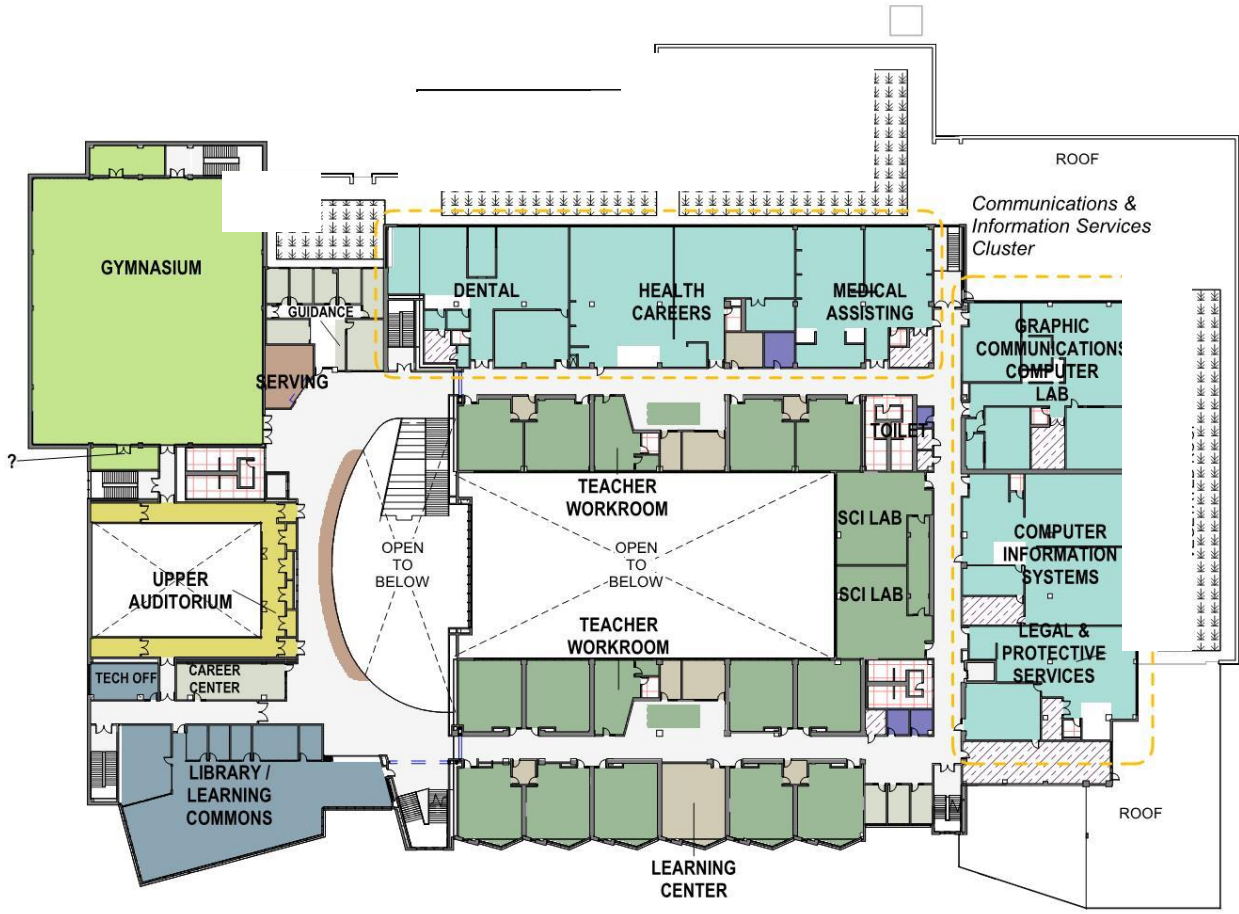
FIRST FLOOR PLAN

- Department Legend**
- 1.0 Core Academic
 - 2.0 Special Education
 - 3.0 Art & Music
 - 4.0 Vocations & Technology
 - 5.0 Health & Physical Education
 - 6.0 Media Center
 - 7.0 Auditorium / Drama
 - 8.0 Dining & Food Service
 - 9.0 Medical
 - 10.0 Administration & Guidance
 - 11.0 Custodial & Maintenance
 - 12.0 Other
 - 13.0 Non-Programmed Spaces
 - 13.1 Core
 - 13.2 Toilets
 - Mezzanines
 - Post-Graduate & Adult Education
 - Satellite Buildings



Tri-County Regional Technical High School

SECOND FLOOR PLAN

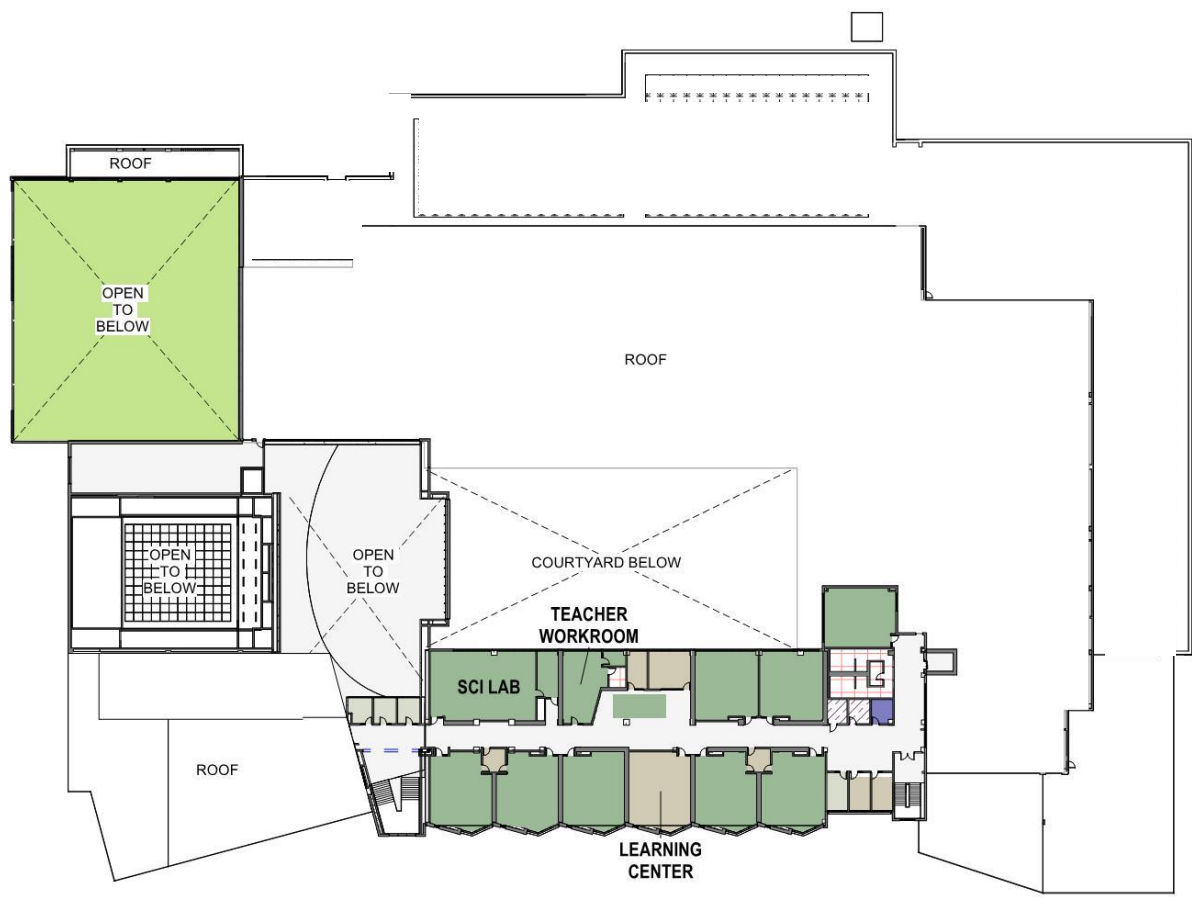


- Department Legend**
- 1.0 Core Academic
 - 2.0 Special Education
 - 3.0 Art & Music
 - 4.0 Vocations & Technology
 - 5.0 Health & Physical Education
 - 6.0 Media Center
 - 7.0 Auditorium / Drama
 - 8.0 Dining & Food Service
 - 9.0 Medical
 - 10.0 Administration & Guidance
 - 11.0 Custodial & Maintenance
 - 12.0 Other
 - 13.0 Non-Programmed Spaces
 - 13.1 Core
 - 13.2 Toilets
 - Mezzanines
 - Post-Graduate & Adult Education
 - Satellite Buildings

THIRD FLOOR PLAN



WARNER LARSON
LANDSCAPE ARCHITECTS



- Department Legend**
- 1.0 Core Academic
 - 2.0 Special Education
 - 3.0 Art & Music
 - 4.0 Vocations & Technology
 - 5.0 Health & Physical Education
 - 6.0 Media Center
 - 7.0 Auditorium / Drama
 - 8.0 Dining & Food Service
 - 9.0 Medical
 - 10.0 Administration & Guidance
 - 11.0 Custodial & Maintenance
 - 12.0 Other
 - 13.0 Non-Programmed Spaces
 - 13.1 Core
 - 13.2 Toilets
 - Mezzanines
 - Post-Graduate & Adult Education
 - Satellite Buildings

Tri-County Regional Technical High School



West Building Elevation



East Building Elevation

PROPOSED SITE LAYOUT



Tri-County Regional Technical High School

PROPOSED ACCESS ROAD WITH GRADING

DRA

WARNER LARSON
LANDSCAPE ARCHITECTS

CONSIGLI
Est. 1905

samiotes

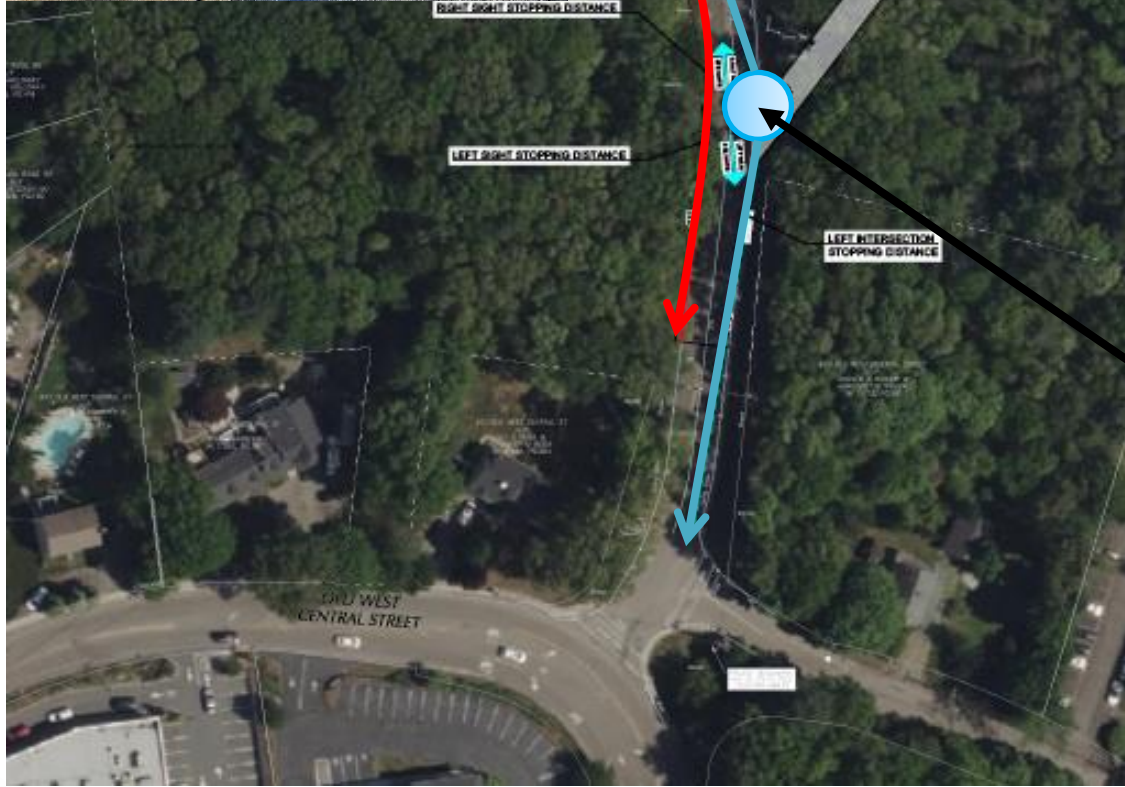


Tri-County Regional Technical High School

SIGHT STOPPING DISTANCE



SOUTHERN VIEW FROM TRI COUNTY DRIVE



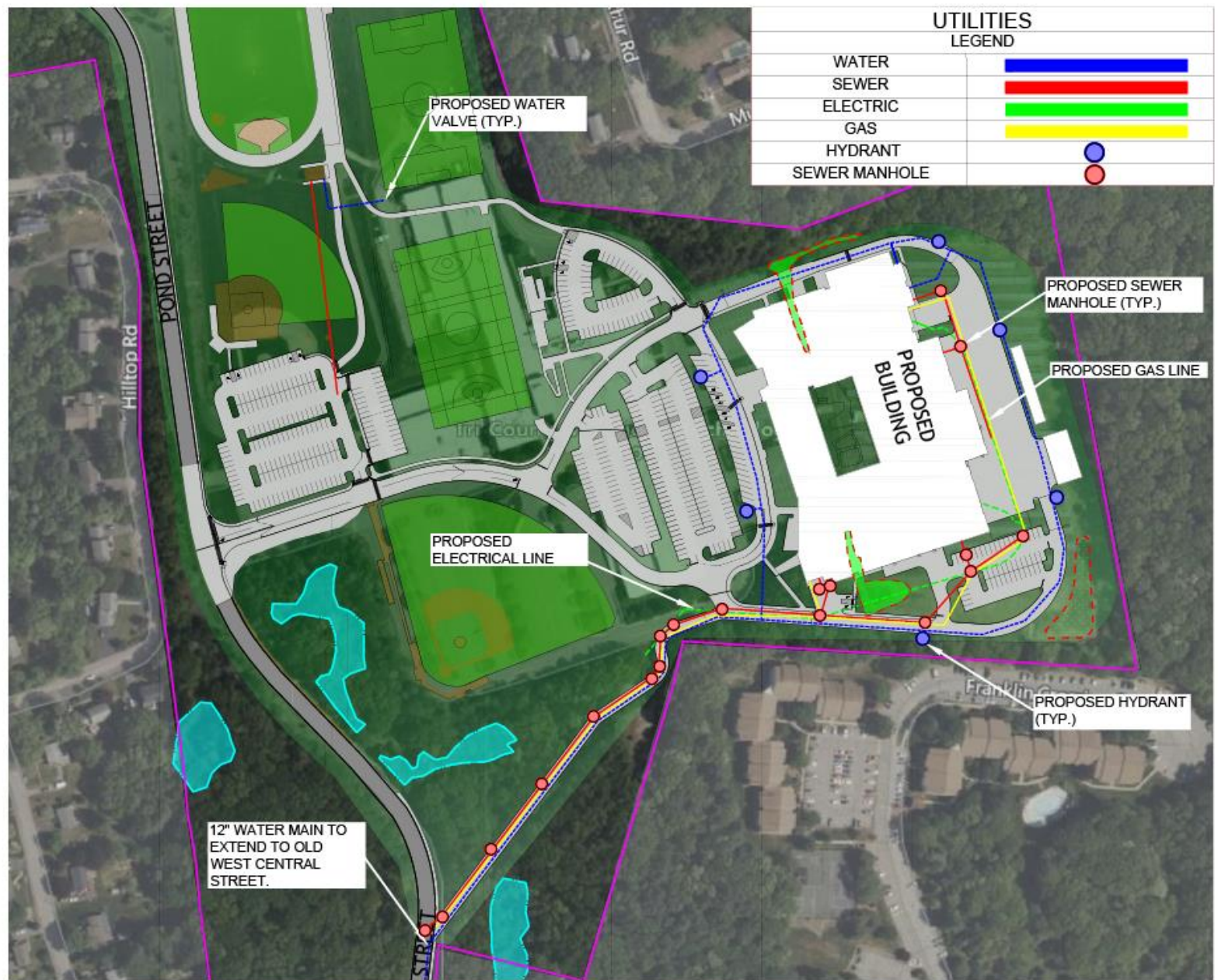
ACCESS DRIVE FOR BUSES AND EMERGENCY VEHICLES



SOUTHERN VIEW FROM NEW ACCESS ROAD TO OLD WEST CENTRAL

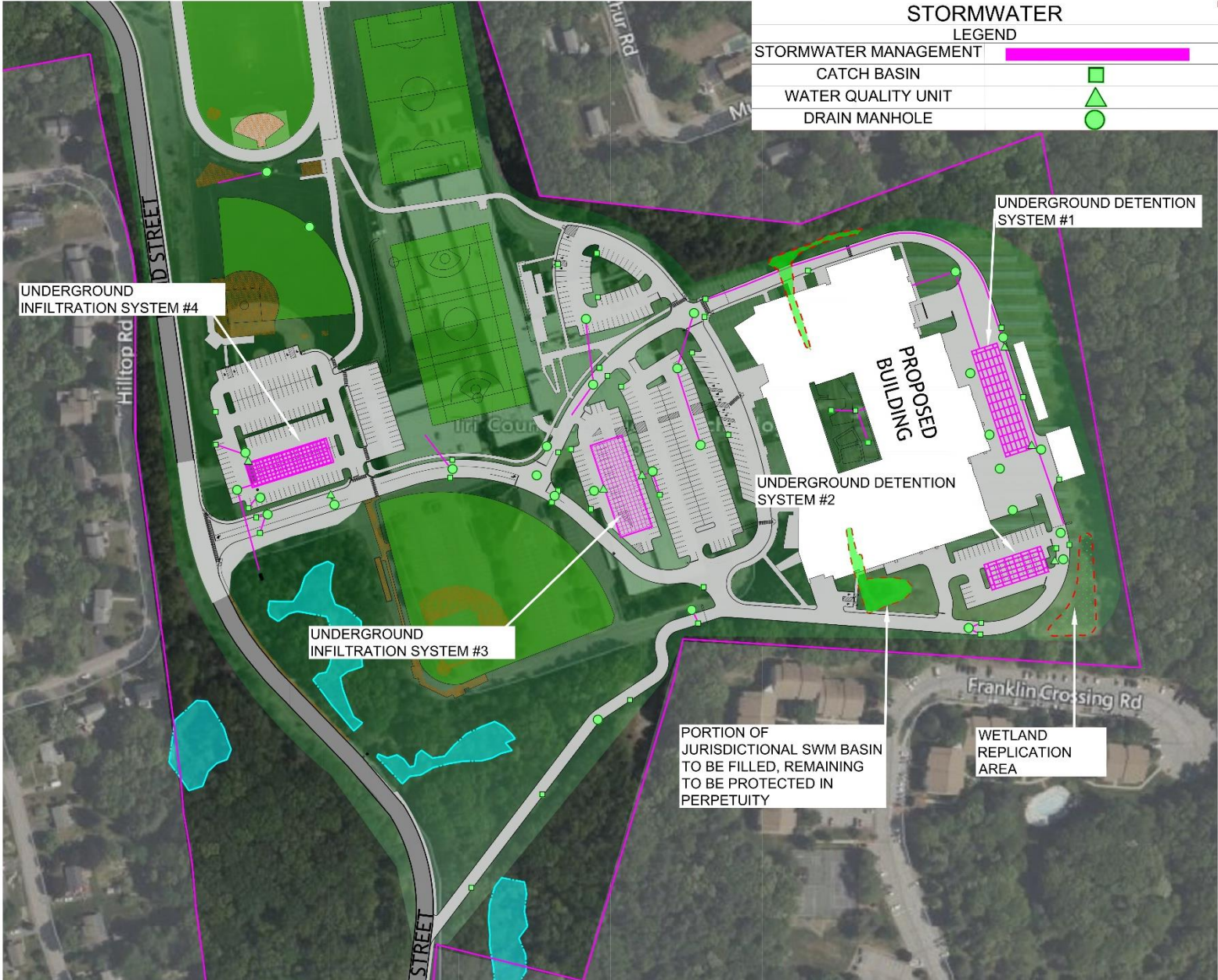


PROPOSED CIVIL UTILITIES



Tri-County Regional Technical High School

PROPOSED STORMWATER MANAGEMENT



STORMWATER LEGEND	
STORMWATER MANAGEMENT	
CATCH BASIN	
WATER QUALITY UNIT	
DRAIN MANHOLE	

UNDERGROUND INFILTRATION SYSTEM #4

UNDERGROUND DETENTION SYSTEM #1

UNDERGROUND DETENTION SYSTEM #2

UNDERGROUND INFILTRATION SYSTEM #3

PORTION OF JURISDICTIONAL SWM BASIN TO BE FILLED, REMAINING TO BE PROTECTED IN PERPETUITY

WETLAND REPLICATION AREA



RENDERING PLANTING LA



Tri-County Regional Technical High School

LANDSCAPE PLAN DETAIL



Tri-County Regional Technical High School

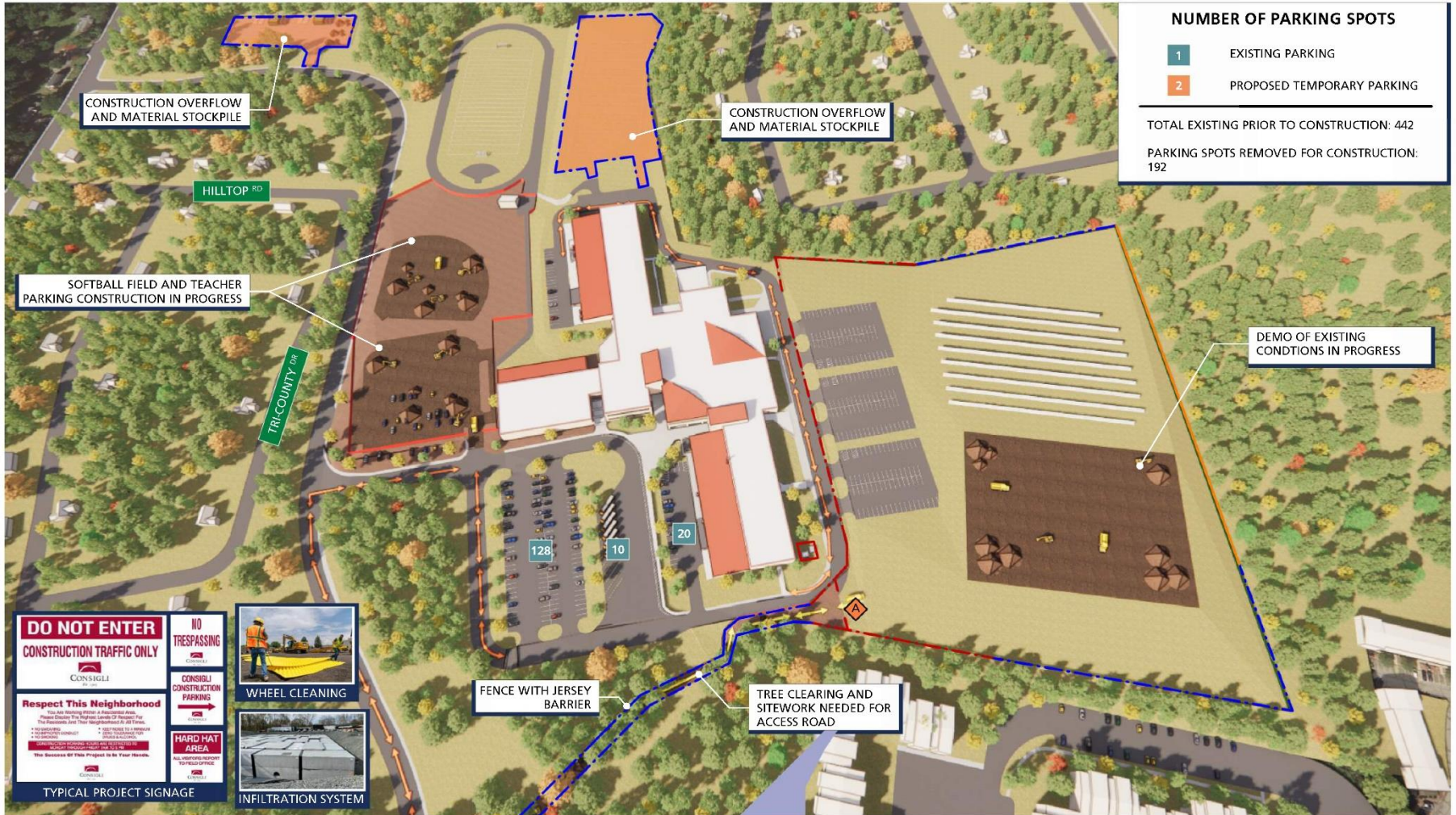
LOGISTICS: MOBILIZATION – FIELD & PARKING LOT SUMMER 2024



TRI-COUNTY REGIONAL VOCATIONAL TECHNICAL HIGH SCHOOL



LOGISTICS: MOBILIZATION - FIELD & PARKING LOT SUMMER 2024



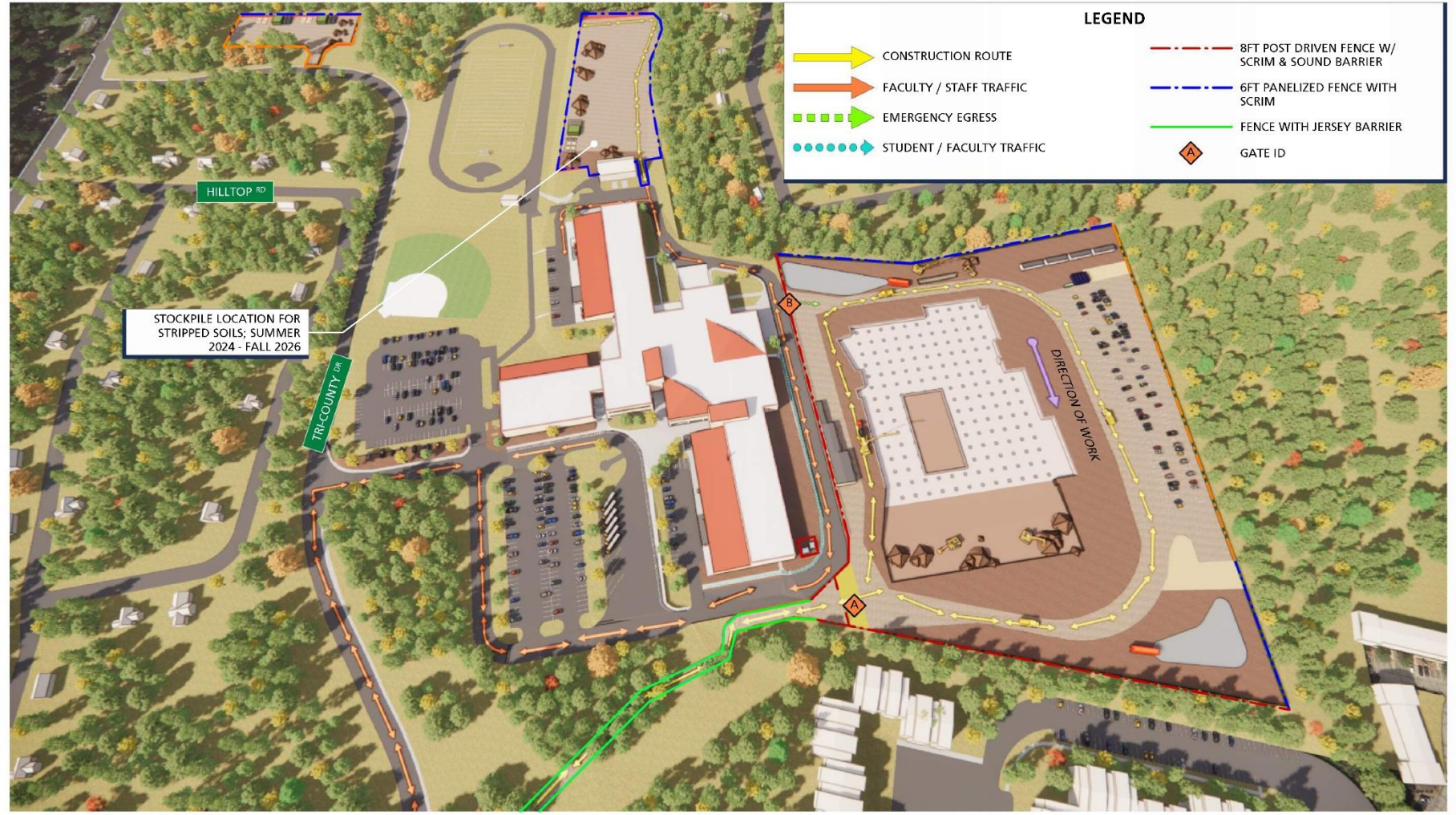


TRI-COUNTY REGIONAL VOCATIONAL TECHNICAL HIGH SCHOOL



LOGISTICS: FOUNDATION

SPRING 2025

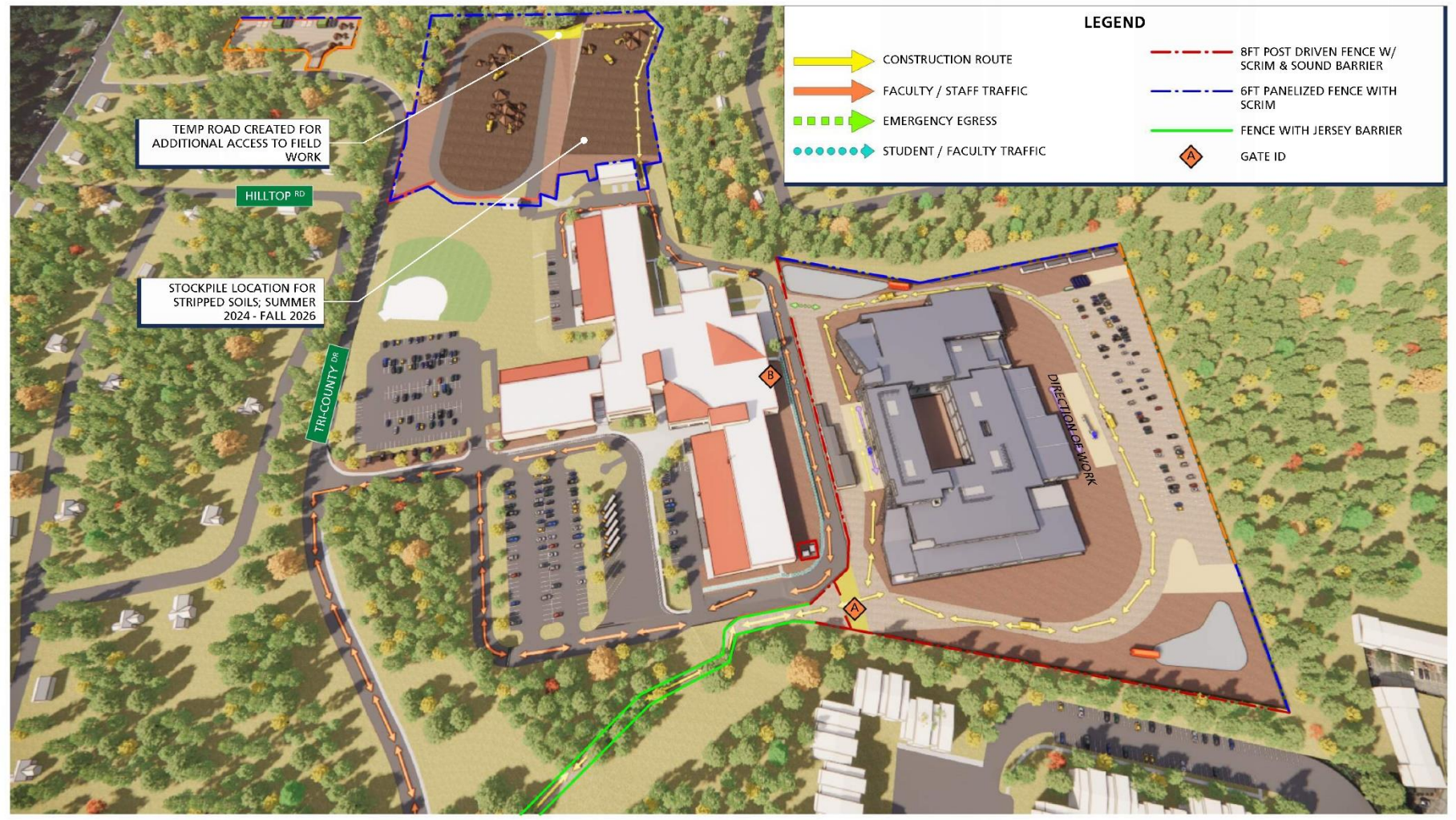




TRI-COUNTY REGIONAL VOCATIONAL TECHNICAL HIGH SCHOOL



LOGISTICS: STRUCTURAL SUMMER 2025



LOGISTICS: ENVELOPE FALL 2025 – SPRING 2026

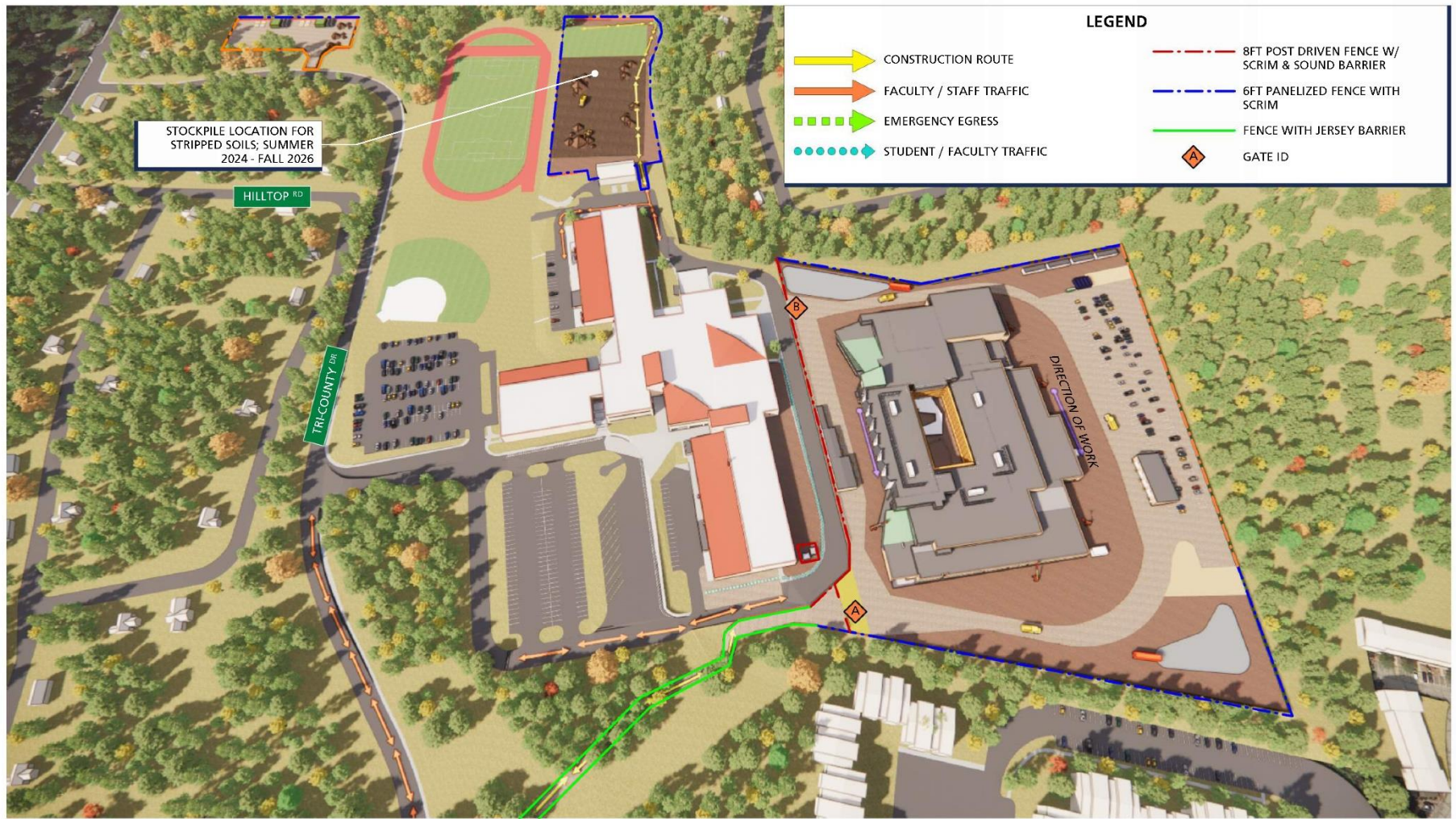


TRI-COUNTY REGIONAL VOCATIONAL TECHNICAL HIGH SCHOOL



LOGISTICS: ENVELOPE

FALL 2025 - SPRING 2026



LOGISTICS: INTERIOR FINISHES AND FIELDS SUMMER 2026

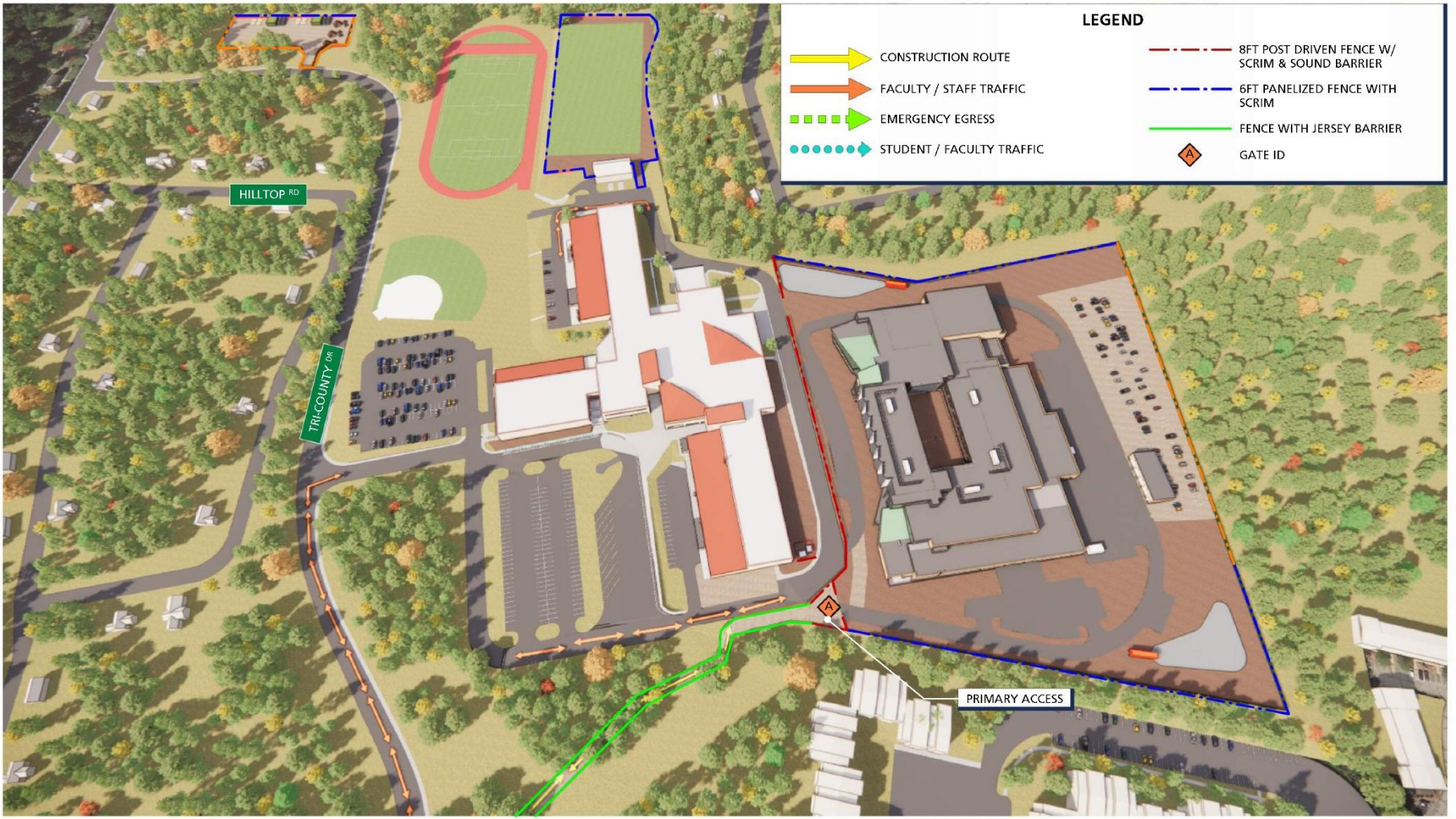


TRI-COUNTY REGIONAL VOCATIONAL TECHNICAL HIGH SCHOOL



LOGISTICS: INTERIOR FINISHES AND FIELDS

SUMMER 2026



Tri-County Regional Technical High School

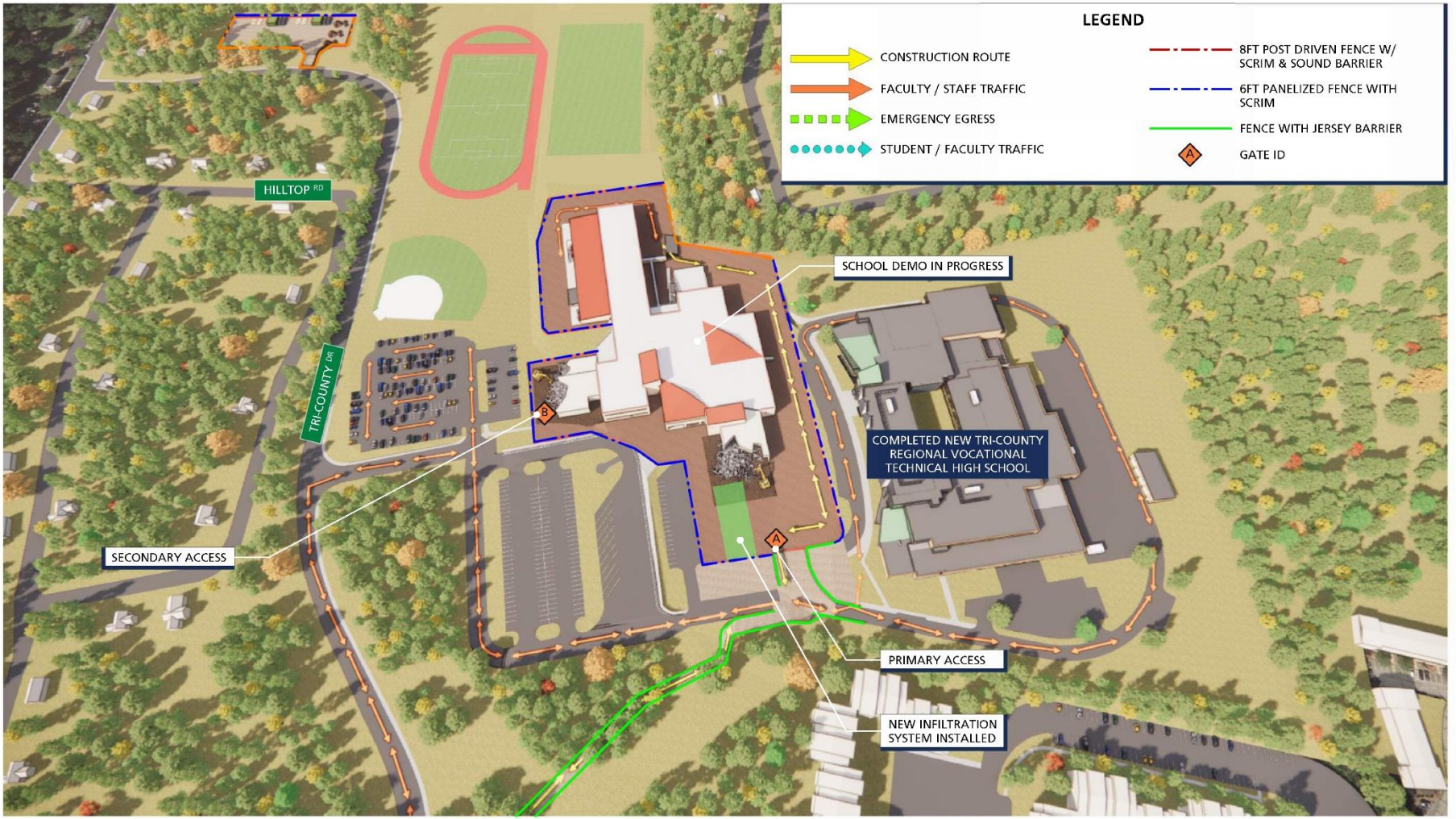
LOGISTICS: TURNOVER, DEMO, AND FIELDS SUMMER 2027



TRI-COUNTY REGIONAL VOCATIONAL TECHNICAL HIGH SCHOOL



LOGISTICS: TURNOVER, DEMO AND FIELDS SUMMER 2027



Tri-County Regional Technical High School

LOGISTICS: DEMO AND FIELDS

SEPTEMBER 2027 – AUGUST 2028

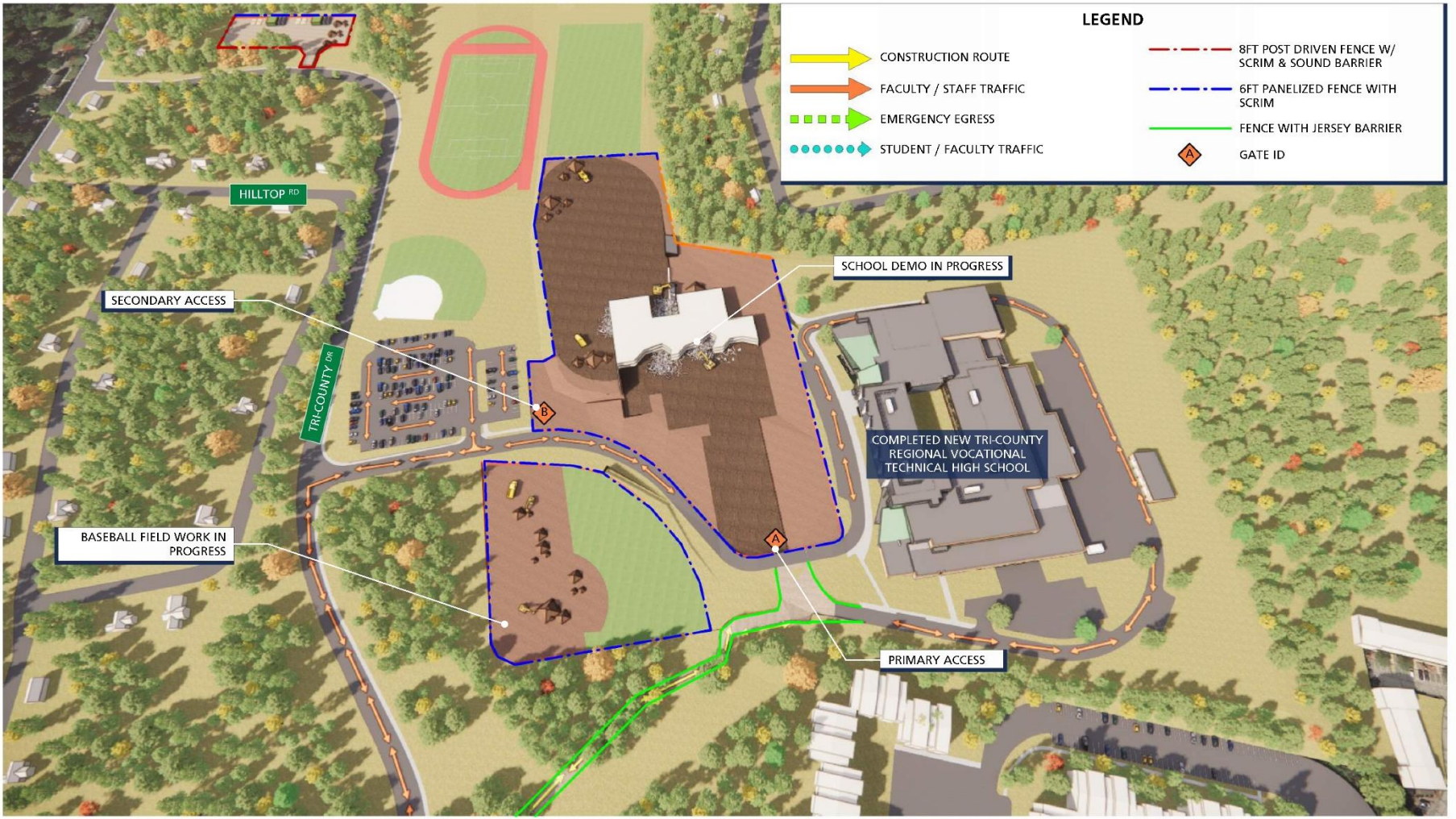


TRI-COUNTY REGIONAL VOCATIONAL TECHNICAL HIGH SCHOOL



LOGISTICS: DEMO AND FIELDS

SEPTEMBER 2027 - AUGUST 2028



LEGEND

- CONSTRUCTION ROUTE
- FACULTY / STAFF TRAFFIC
- EMERGENCY EGRESS
- STUDENT / FACULTY TRAFFIC
- 8FT POST DRIVEN FENCE W/ SCRIM & SOUND BARRIER
- 6FT PANELIZED FENCE WITH SCRIM
- FENCE WITH JERSEY BARRIER
- GATE ID

Tri-County Regional Technical High School

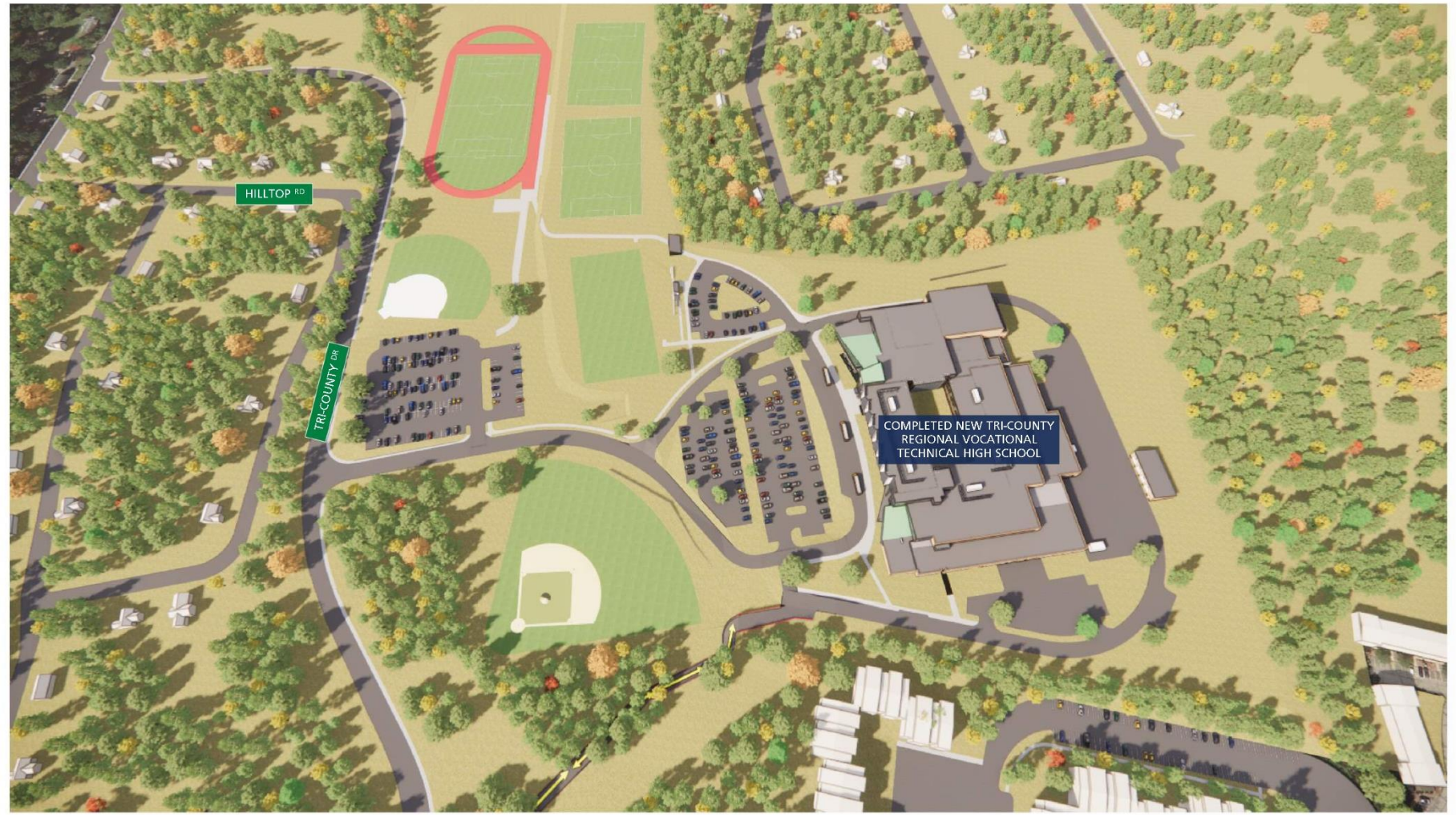


TRI-COUNTY REGIONAL VOCATIONAL TECHNICAL HIGH SCHOOL



**LOGISTICS:
COMPLETE**

FALL 2028



Tri-County Regional Technical High School

Tri-County Regional Technical High School Q&A



WARNER LARSON
LANDSCAPE ARCHITECTS

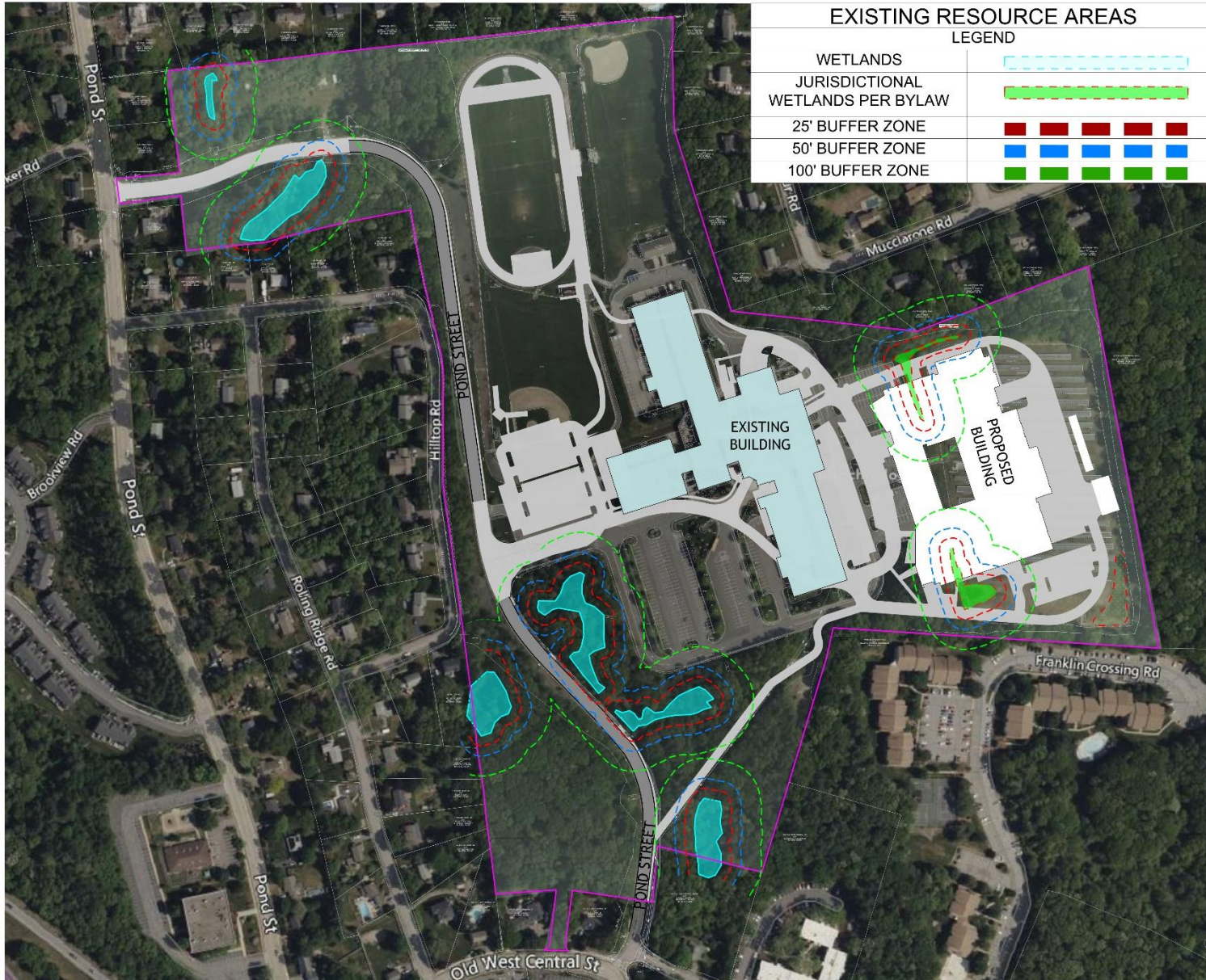


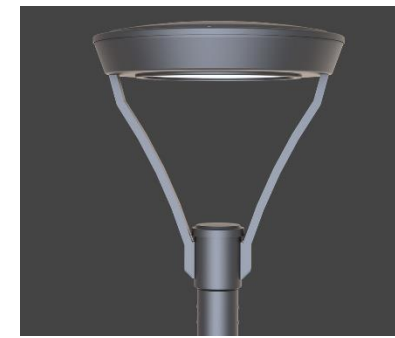
samiotes



Questions & Comments

EX. BUILDING vs. PROPOSED BUILDING W/ PROPOSED HARDSCAPE (GRAY)





Luminaire Schedule									
Symbol	Qty	Label	Description	Tag	LLF	Luminaire Lumens	Luminaire Watts	Mounting Height	BUG Rating
	11	SL1-5WQ	GALN-SA2B-730-U-5WQ	MCGRRAW-EDISON	0.900	10907	82	20	B4-U0-G2
	20	SL1-T3	GALN-SA2B-730-U-T3	MCGRRAW-EDISON	0.900	10334	82	20	B2-U0-G2
	7	SL1-T3-HSS	GALN-SA2B-730-U-T3-HSS	MCGRRAW-EDISON	0.900	7651	82	20	B1-U0-G2
	22	SL1-T4FT	GALN-SA2A-730-U-T4FT	MCGRRAW-EDISON	0.900	8357	63	20	B1-U0-G2
	5	SL1-T4W	GALN-SA2B-730-U-T4W	MCGRRAW-EDISON	0.900	10429	82	20	B2-U0-G2
	6	SL2-5WQ	GALN-SA2B-730-U-5WQ	MCGRRAW-EDISON	0.900	10907	82	20	B4-U0-G2
	15	SLP-T3	HRZ-1-T3-32L-7-30K-UNV	NLS	0.900	7881	71	12	B2-U0-G2
	24	SLP-T5	HRZ-1-T5-32L-7-30K-UNV	NLS	0.900	8239	71	12	B3-U0-G2
	9	SLW-T4W	GWC-SA2B-730-U-T4W	MCGRRAW-EDISON	0.900	10785	86	16	B2-U0-G2

SITE LIGHTING



Tri-County Regional Technical High School

SITE LIGHTING

